

Theatre Virtual Learning

Theatre Design & Advanced Theatre Design
Stock Scenery: Building a Flat

May 5



Lesson: May 5

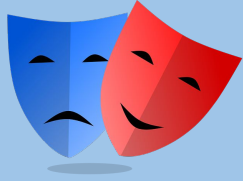
Objective/Learning Target: The student will understand how to make a flat with the measurements involved.



Stock Scenery: Building a Flat

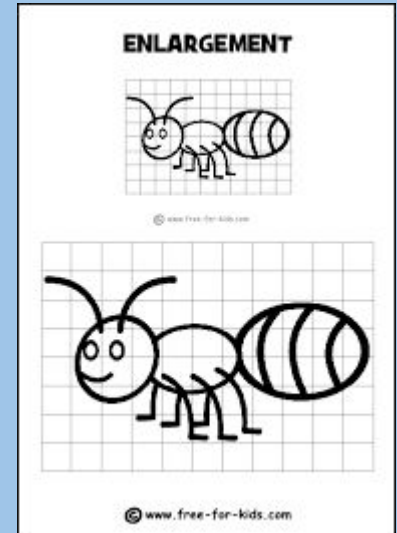
Let's Get Started / Warm Up Activities:

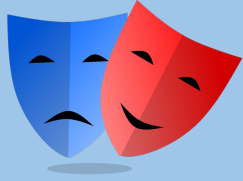
What does drafting something “to scale” mean?



Scale

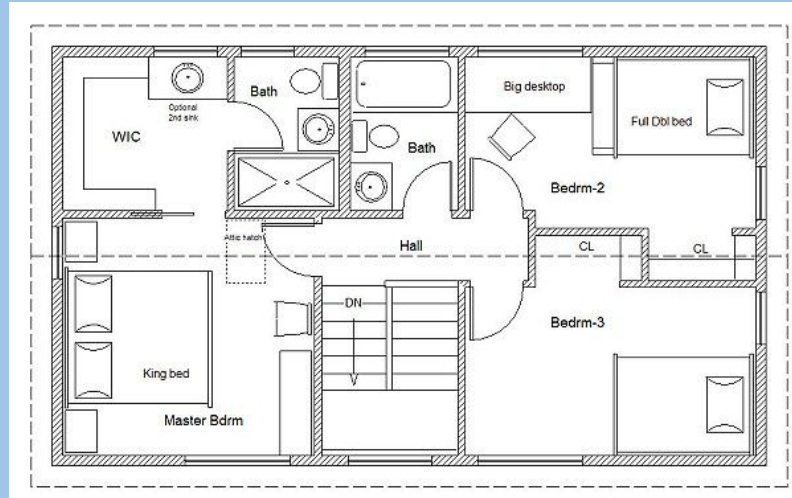
- Scaled drawings are necessary to give crews the proper plans to build the necessary pieces for the stage.
- Scale refers to creating a drawing that is proportionally the same as what you need to create. Such as the bee drawing.

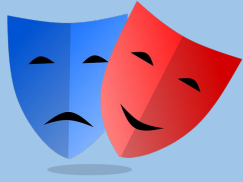




Scale

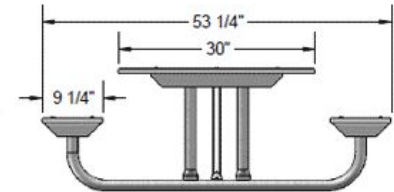
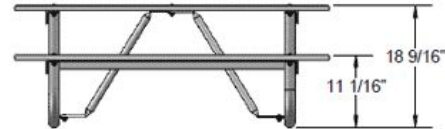
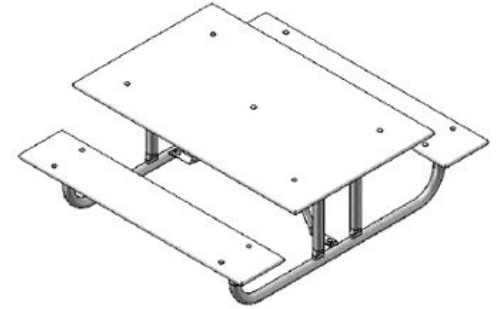
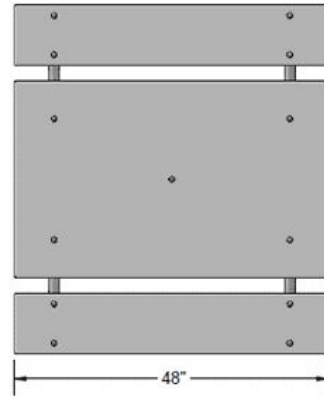
- Set designers might use $\frac{1}{2}$ " scale. This means everything on the drawing is created so that every $\frac{1}{2}$ " equals a foot in real life.
- Scale is used for things like house plans such as this

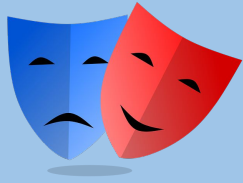




Scale

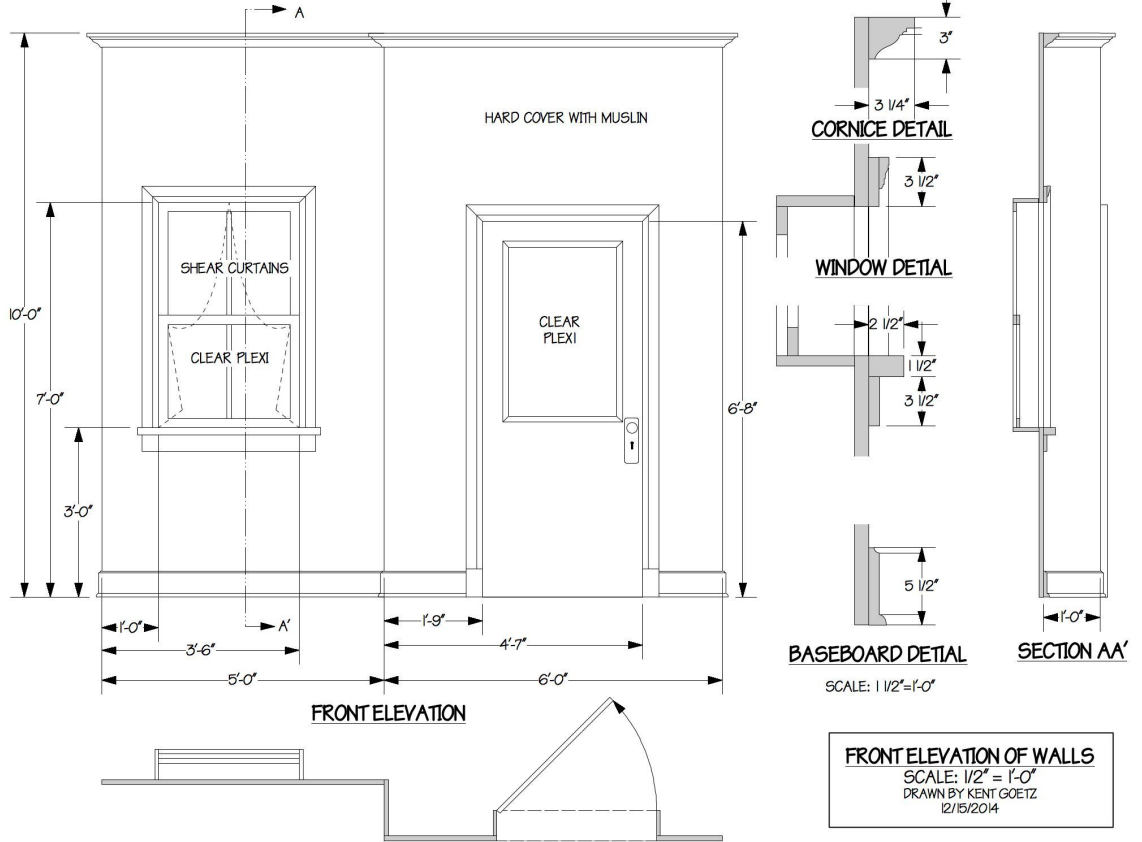
- When drawing building plans to scale, using dimension lines is important.
- Notice, this 3-dimensional object is drawn in several views for clarity.

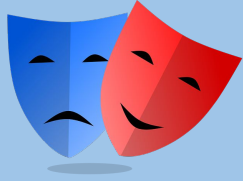




Scale

- Scaled build plans for flats with window and door.
- Because of the detail, there are several views of these, as well.





Practice

Sketch out a flat to scale with all of its parts in 1 " scale.

Use the same layout as you sketched yesterday.

Make the flat 4' x 8'.

Be sure to include the dimension lines.

This is a simple flat, so you will only need the one view of it.

Instead of labeling the parts, use dimensions.

Keep this for tomorrow's lesson.

